



# iSense™ 3D scanner



## MANUFACTURING *THE* FUTURE

[WWW.3DSYSTEMS.COM](http://WWW.3DSYSTEMS.COM) | NYSE:DDD

# iSense™ 3D scanner



Ultra portable, iPad-mounted 3D Scanner for the home, school or office



Discover the power of physical photography



# Welcome to the 3D Scanning Experience!



Most versatile, portable and affordable

Works with iPad 4G, Air and Mini Retina

Fast, Compact, Plug & Play

Full Color Capture

Scan large and small objects

For lifestyle scanning & accurate models

Outputs 3D Printable designs

Integrated with Cubify Design & Sculpt

For Families, Designers, Students, Artists



# Easy & Automated Use

Secure bracket for easy mounting

Plugs into Lightning port on iPad

Simple intuitive app

Can be used with third-party apps

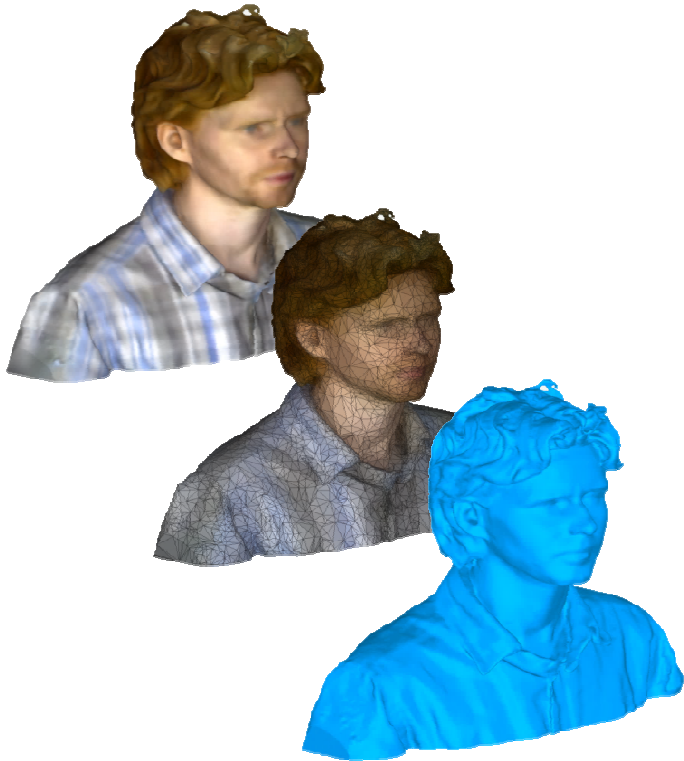
Automatic object recognition

Auto tracking

Easy editing tools :

Crop | Trim | Erase | Solidify | Share

Output .STL, .OBJ & .PLY



# Technical Specifications

<b>Dimensions</b>	11.9cm x 2.9cm x 2.8cm
<b>Weight</b>	99.2 grams
<b>Field of view</b>	Horizontal: 58°      Vertical: 45.0°
<b>Operating temp</b>	10-40° C
<b>Battery Life</b>	3-4 hours of active sensing, 1000+ hours standby
<b>Precision</b>	1% of measured distance (typical)
<b>Operating Range</b>	Min 0.40m      Max 3.5m
<b>Spatial x/y resolution @ 0.5m</b>	0.9mm
<b>Scan Volume</b>	Min: 0.2 x 0.2 x 0.2m    Max: 3 x 3 x 3m
<b>Depth Image Size</b>	240(w) x 320(h) pixel
<b>Depth resolution @ 0.5m</b>	1.0mm



# Target Market

**Families:** Capture the important moments of your life in 3D

**Designers:** Artists, animators, architects, engineers and innovators

**Makers:** Hobbyist, inventors and tinkerers

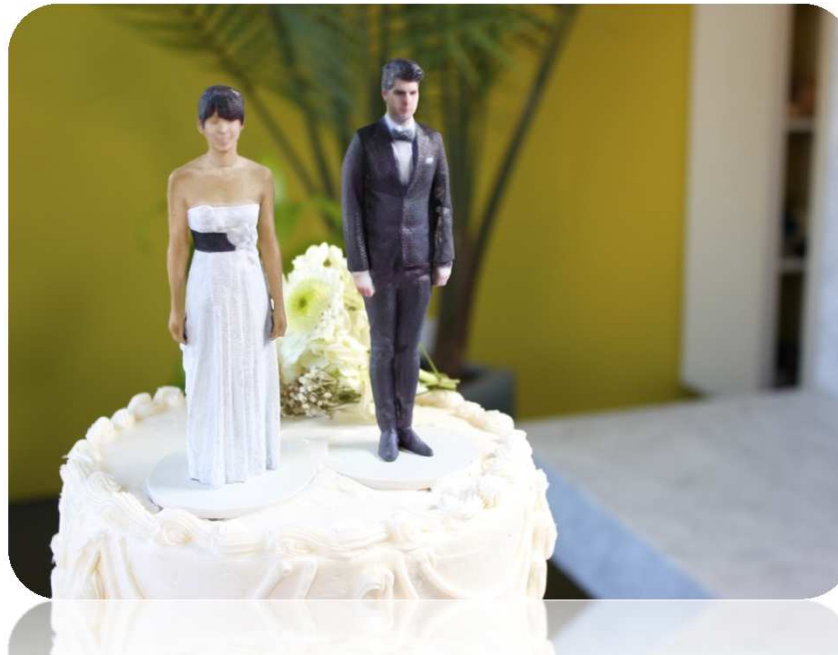
**Education:** Elementary, Middle & High Schools; Technical Colleges; STEM programs

**Businesses:** Seeking competitive edge through affordable reverse engineering and innovation



# Participate as a Reseller

- Bundle with Consumer 3D Printers and Cubify Software
- Warranty Replacement & Hotline Customer Support by 3D Systems



# Next Steps

- Signed “Consumer Solutions” Reseller Agreement required
- First order to be placed within two weeks after signup
- Contact your channel manager

or at +1 (888) 598-1440

or [ResellerInquiry@Cubify.com](mailto:ResellerInquiry@Cubify.com)





# Thank you!



## MANUFACTURING *THE* FUTURE

