

# Mac Driver Setup Guide



## Legal Notes

Unauthorized reproduction of all or part of this guide is prohibited.

The information in this guide is subject to change without notice.

We cannot be held liable for any problems arising from the use of this product, regardless of the information herein.

© 2019 KYOCERA Document Solutions Inc.

## Regarding Trademarks

Mac®, Bonjour®, and AirPrint® are registered trademarks of Apple Inc., registered in the U.S. and other countries.

All other brand and product names herein are registered trademarks or trademarks of their respective companies.

# Table of Contents

## Chapter 1 Installation

---

Package Installer Setup.....	1-1
Adding Printers.....	1-4
Switching to PCL Mode or PDF Mode.....	1-8
Configuring Installable Options.....	1-9

## Chapter 2 PDL Switch Tool

---

PDL Switch Preference Pane.....	2-1
Switching between KPDL, PDF, and PCL Modes.....	2-2
Uninstalling the PDL Switch Tool.....	2-3

## Chapter 3 PCL Mode and PDF Mode Features

---

Print Dialog.....	3-1
Standard Panes for PCL Mode (Raster Driver) and PDF Mode.....	3-1
Layout Pane.....	3-1
Paper Handling Pane.....	3-1
Paper Feed Pane.....	3-2
Cover Page Pane.....	3-2
Print Panel Pane.....	3-3

## Chapter 4 Print Panel Application

---

Printer Pane.....	4-1
Basic Pane.....	4-1
Layout Pane.....	4-2
Finishing Pane.....	4-2
Imaging Pane.....	4-3
Job Pane.....	4-4
Watermark Pane.....	4-4
Net Manager Pane.....	4-5
About Dialog.....	4-6
Data Collection.....	4-7
Supported Print Features.....	4-7

## Chapter 5 PCL and PDF Comparison with KPDL

---



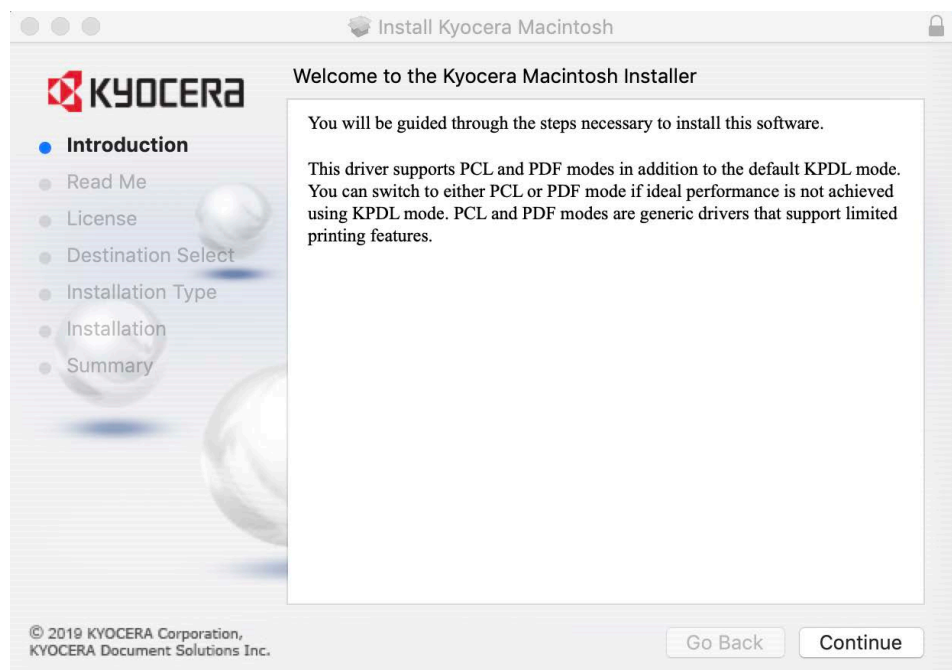
# 1 Installation

Mac Driver 4.2 supports Mac OS X 10.9 and later. Its PCL Mode and PDF Mode can be installed by running the provided package installer. A user account with administrative rights is required to perform the installation. The recommended steps are described below.

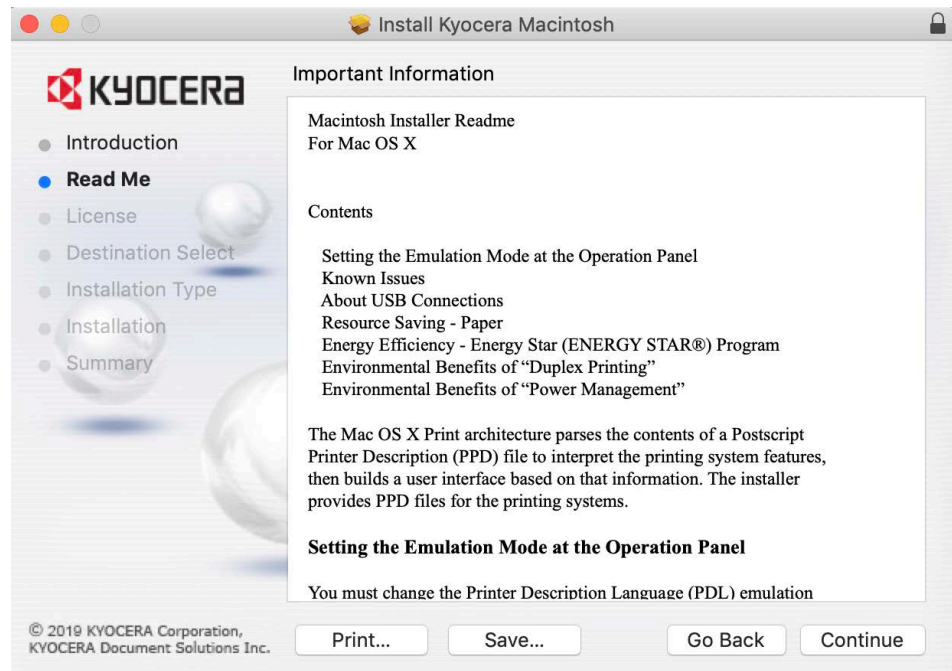
## Package Installer Setup

You can install the driver using the provided package installer.

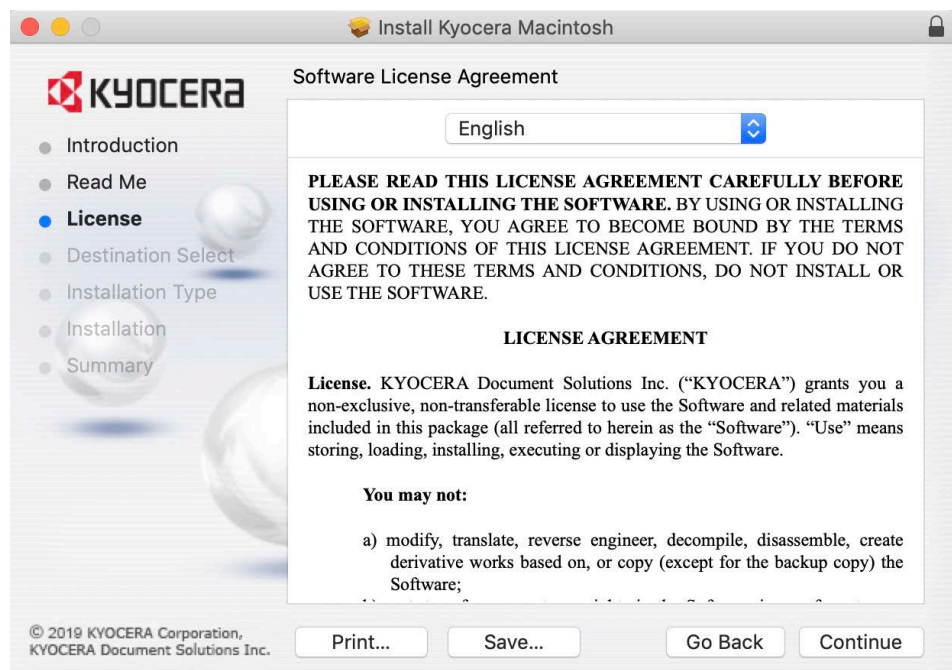
- 1 Double-click the **.DMG** file to run the installer.
- 2 In the installer dialog, click **Continue** to proceed to the readme page.



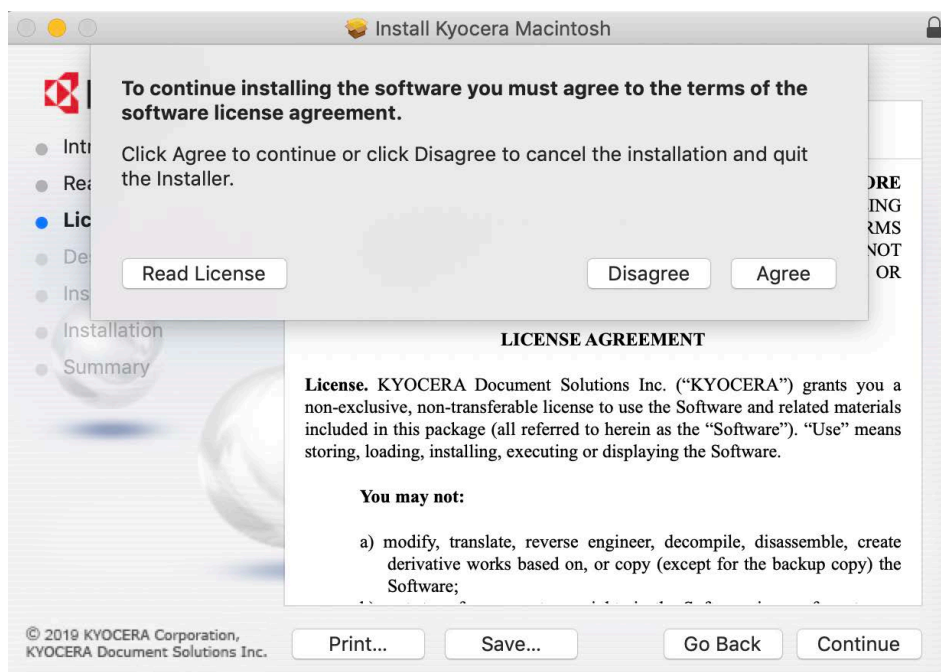
- 3 Click **Continue** to proceed to the license agreement page.



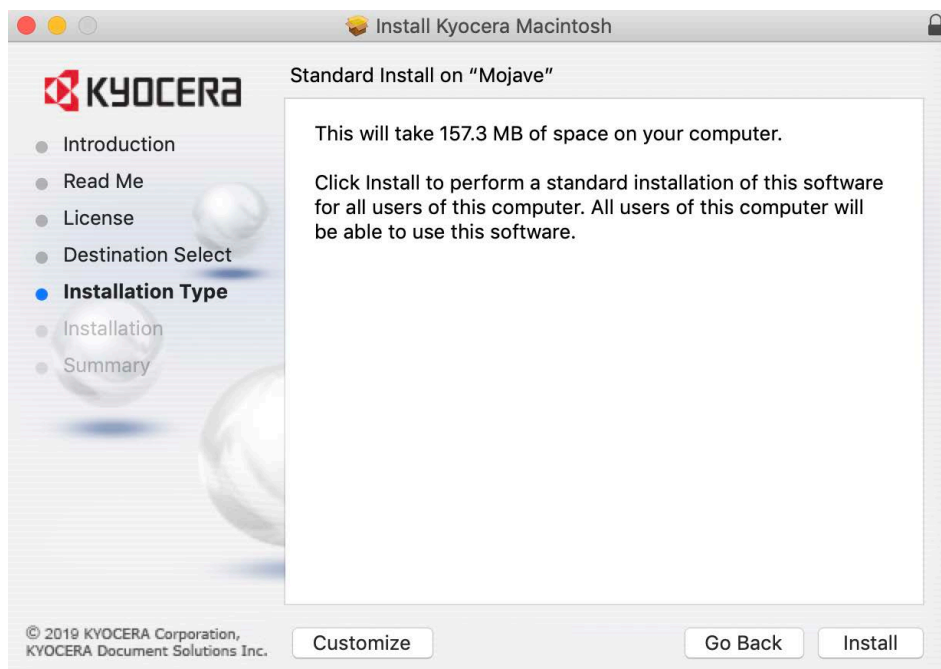
- 4 Review the Software License Agreement, and then click **Continue**.



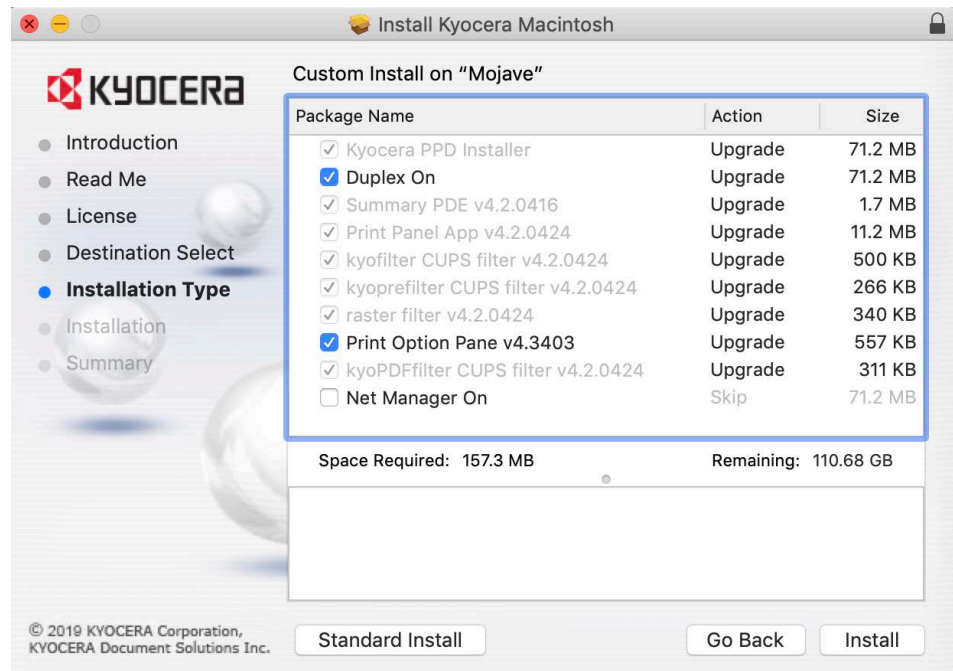
- 5 Click **Agree** to accept the terms of the license agreement.



- 6 Click **Install** and enter the admin password to complete the standard installation. Alternatively, you can select **Customize** to perform a custom installation. For custom installation, select the Print Option Pane checkbox to install the Print Option Pane.

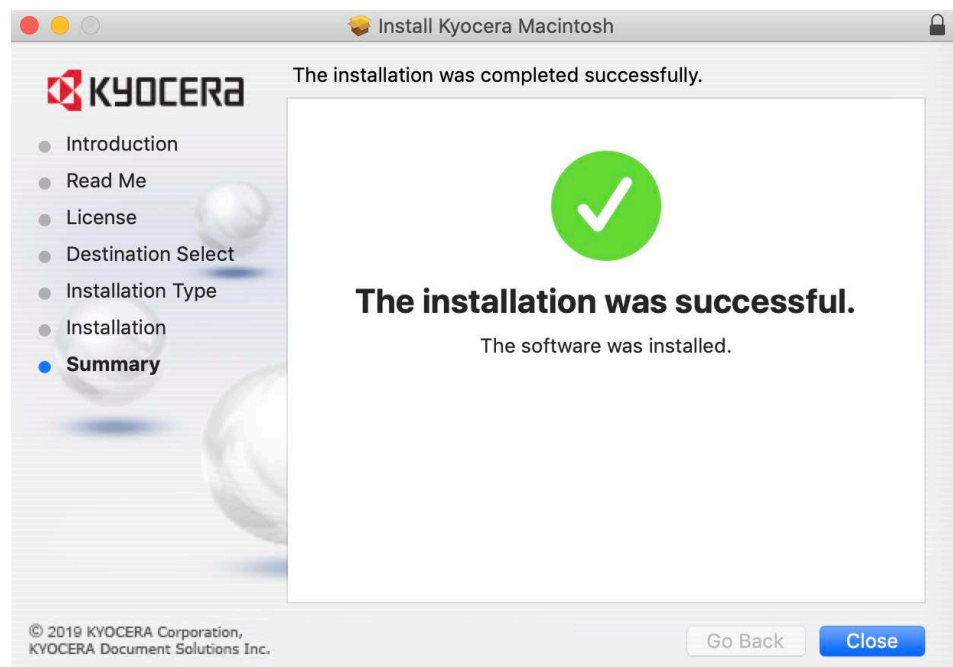


Standard Installation Page



Custom Installation Page

- 7** Click **Close** to exit when the installation is complete.

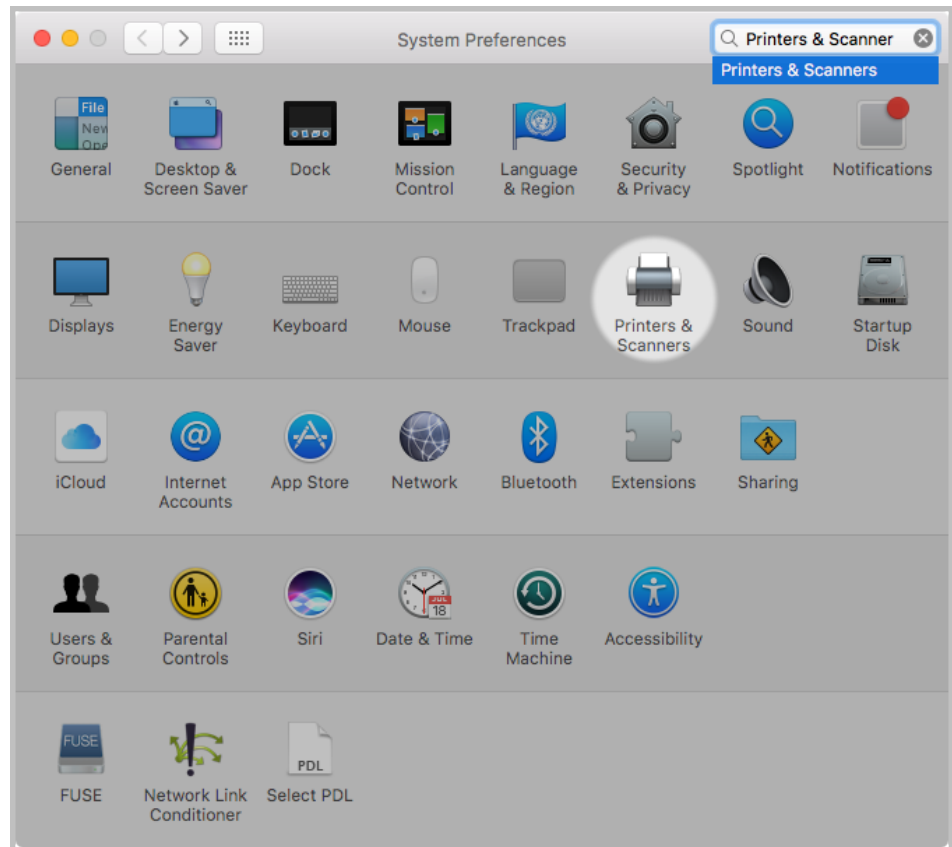


## Adding Printers

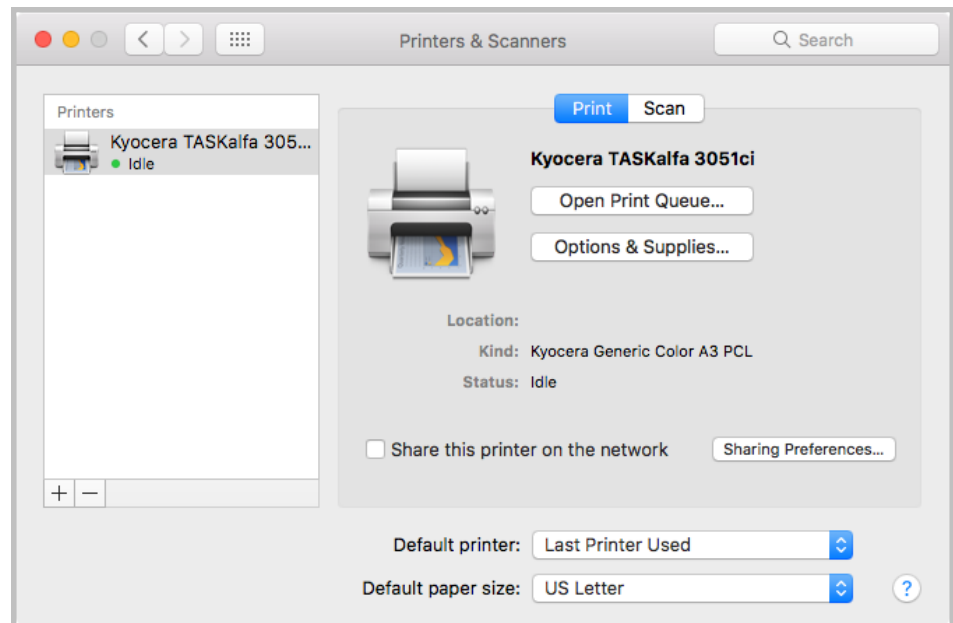
After you install the driver, you can add the printers to be used on the system.



- 1 Open System Preferences and click **Printers & Scanners** (this may also be called Print & Scan or Print & FAX, depending on the Mac OS X version you are using).



- 2 In the Print & Fax dialog, you can click the “+” icon at the bottom of the Printers list to open the Add Printer dialog (this may also be called Add. depending on the Mac OS X version you are using).

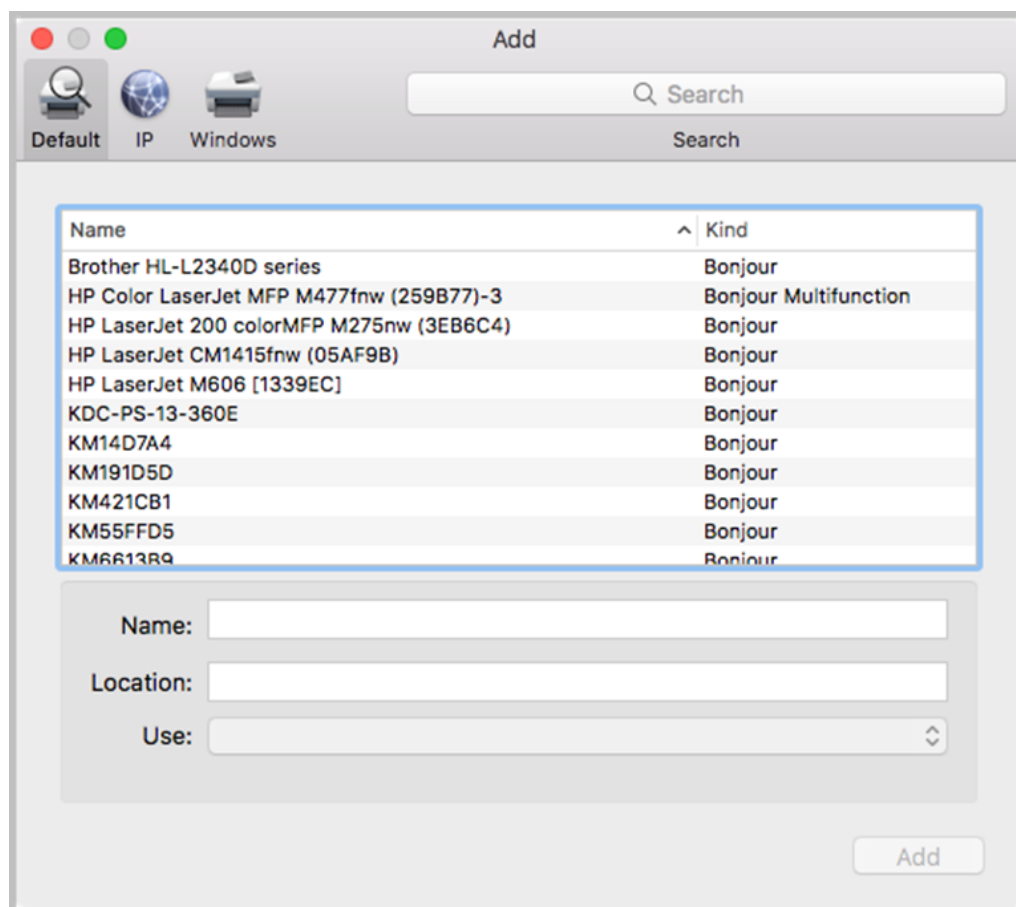


To add a printer, you must first choose a connection type—**Bonjour**, **IP Printer**, or **Windows**. If you choose the **Default** connection type, Printer Setup Utility displays a list of all available printers with Bonjour support.

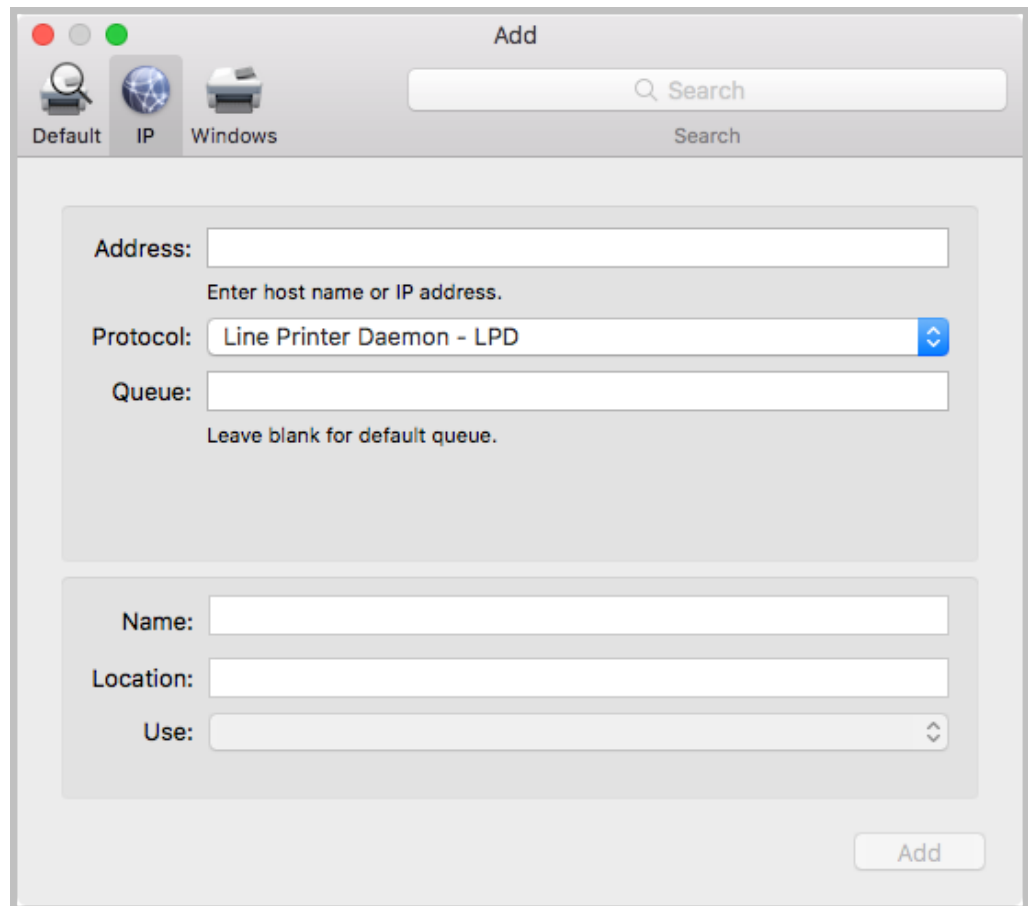
When you select a printer to add to the Printers list, Printer Setup Utility retrieves the selected printer's address, icon, and model information. Printer Setup Utility then uses this information to create a new printer queue, and then adds the printer to the list when you click **Add**.



On Mac OS 10.10 and later, **Secure AirPrint** may be selected by default.



For better printing support, it is recommended to use Line Printer Daemon (LPD) for the protocol. To add an LPR printer that uses IP, enter the printer's DNS host name or IP address and then select the appropriate model from the Print Using menu. The matching PPD for the printer is automatically selected by the OS.



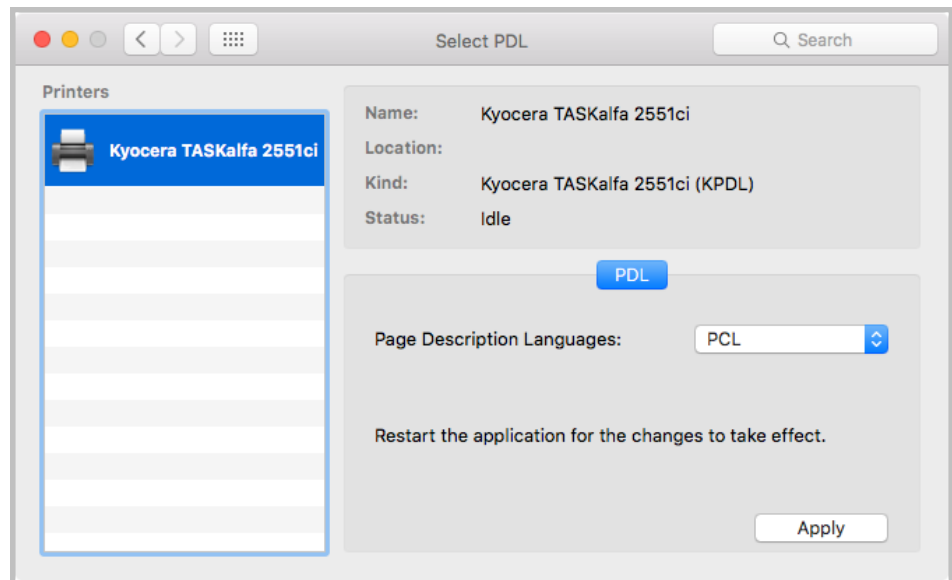
Installable options must be set manually after you switch to PCL mode or PDF mode.

---

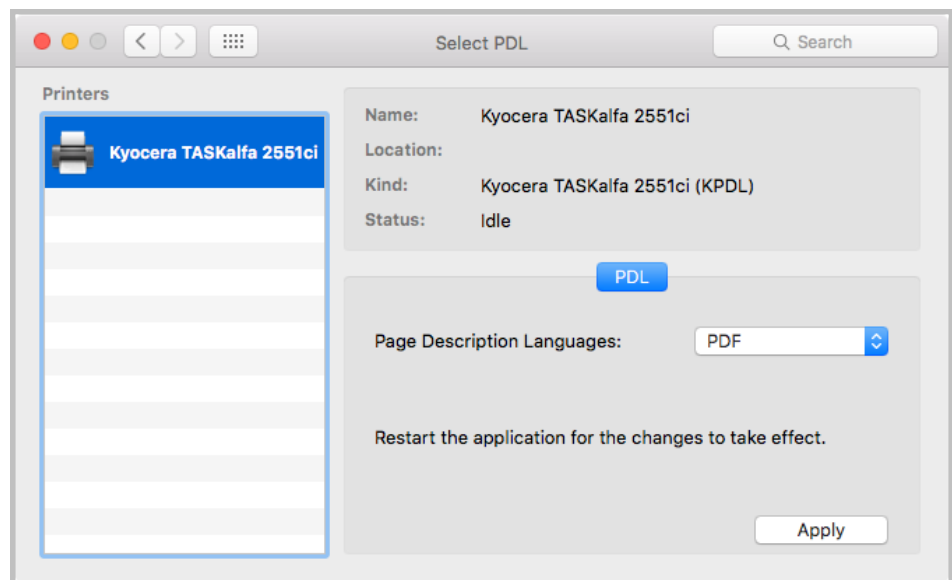
## Switching to PCL Mode or PDF Mode

After you install the driver and add at least one printer, you can switch the driver to either PCL mode or PDF mode.

- 1** Open **System Preferences > Select PDL**.
- 2** Select a printer from the Printers list.
- 3** Select **PCL** or **PDF** from the Page Description Languages dtop-down menu.
- 4** Click **Apply**.



Switch to PCL



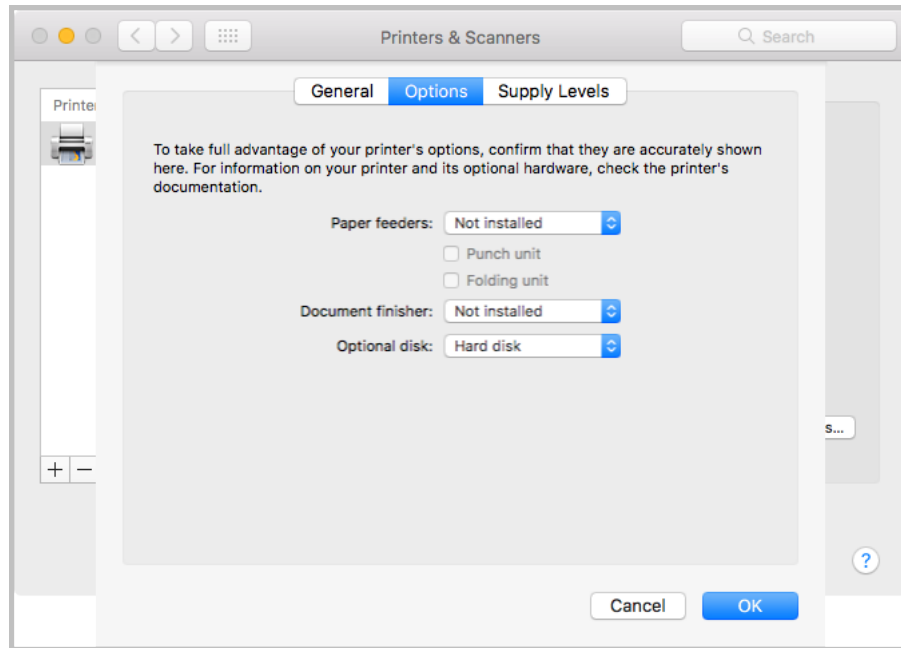
Switch to PDF

## Configuring Installable Options

After you switch the driver to PCL mode or PDF mode, you can set up the installable options for the printer.

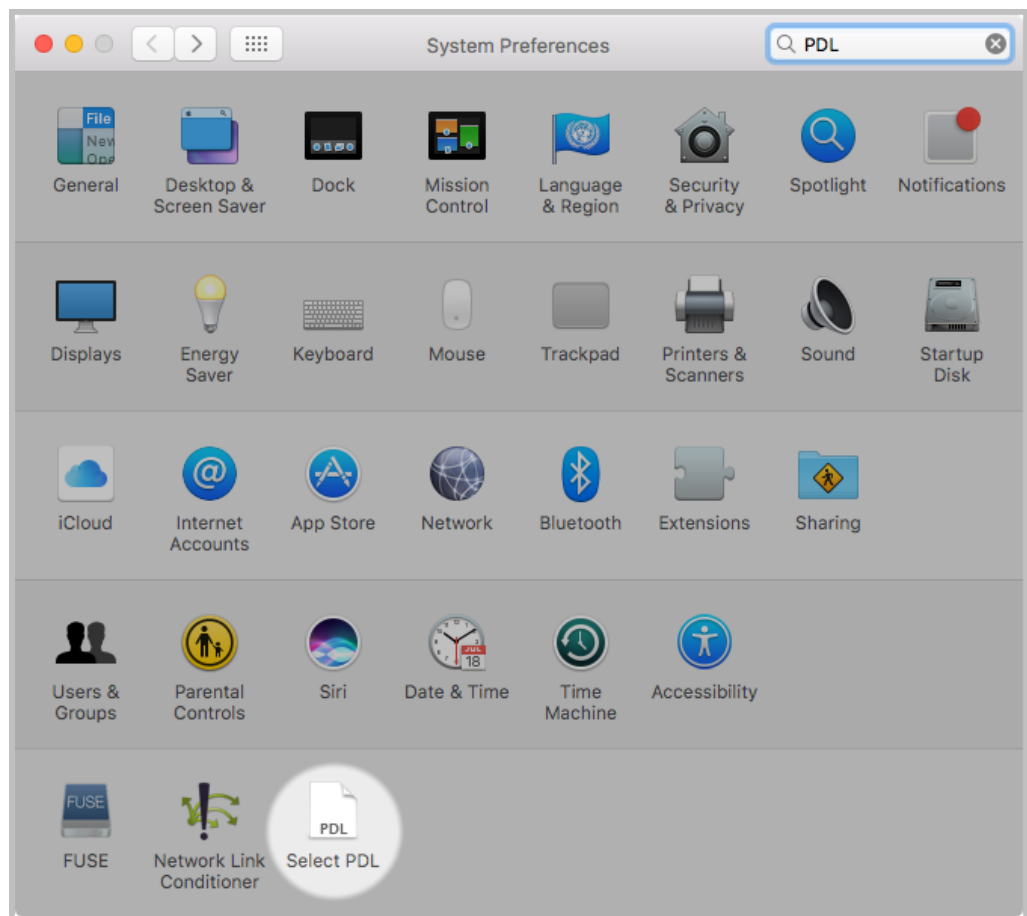
- 1 Click **Print & Fax** from System Preferences.
- 2 Select a printer from the Printers list.

- 3 Click **Options & Supplies**.
- 4 Click the **Driver** tab to modify the installable options.



## 2 PDL Switch Tool

Once the driver package is installed, the PDL switch tool appears in the System Preferences dialog under **Other** > **Select PDL**. The PDL switch tool only works with Mac Driver 4.0 and later, and the models supported by the driver.



### PDL Switch Preference Pane

The PDL Switch preference pane is made up of 3 main components: Discovery, Device Status, and PDL Control.

#### Discovery

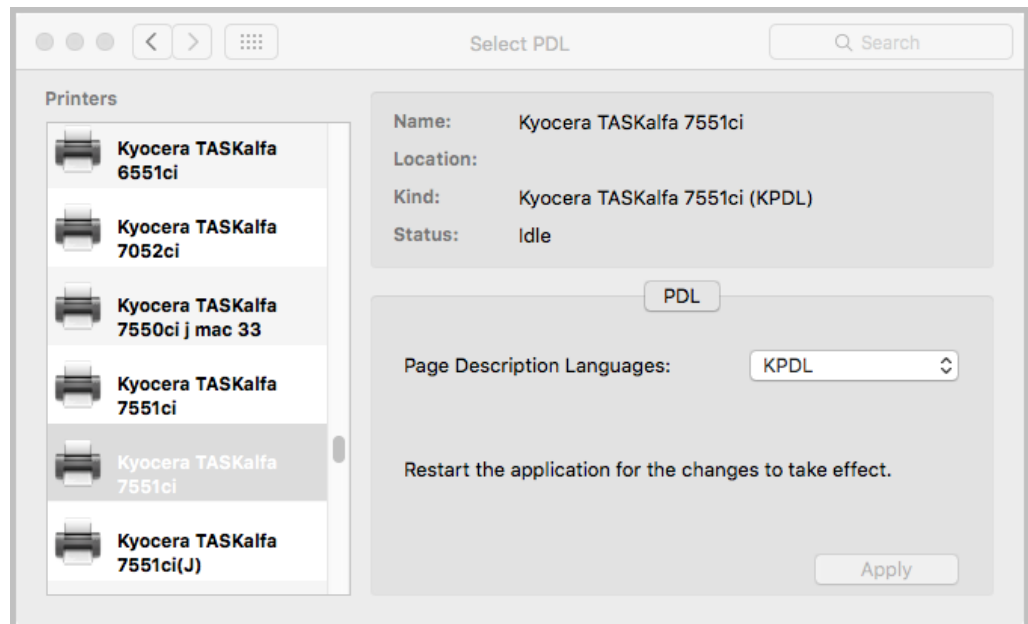
The Printers list displays the printers discovered by the driver. The current printer is selected.

### Device Status

The upper section shows the properties of the selected printer, including its current status.

### PDL Control

The lower section allows you to modify the PDL. After switching the PDL, all open applications need to be restarted for the changes to take effect

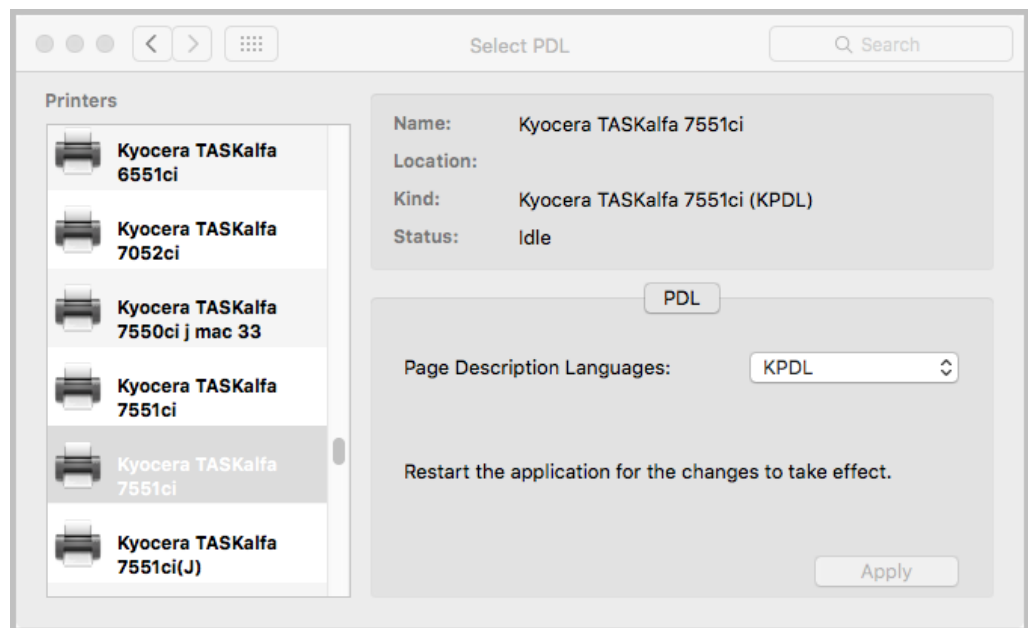


## Switching between KPDLL, PDF, and PCL Modes

The following steps describe how to switch between KPDLL, PDF, and PCL modes.

1. Open **System Preferences > Select PDL**.
2. Select a printer from the Printers list.
3. Select **KPDLL**, **PDF**, or **PCL** from the Page Description Languages drop-down menu.
4. Click **Apply**.





## Uninstalling the PDL Switch Tool

The PDL switch tool can be uninstalled from System Preferences.

1. Open **System Preferences**.
2. Right-click the **Select PDL** icon and then click **Remove "Select PDL" Preference Pane**.



## 3 PCL Mode and PDF Mode Features

### Print Dialog

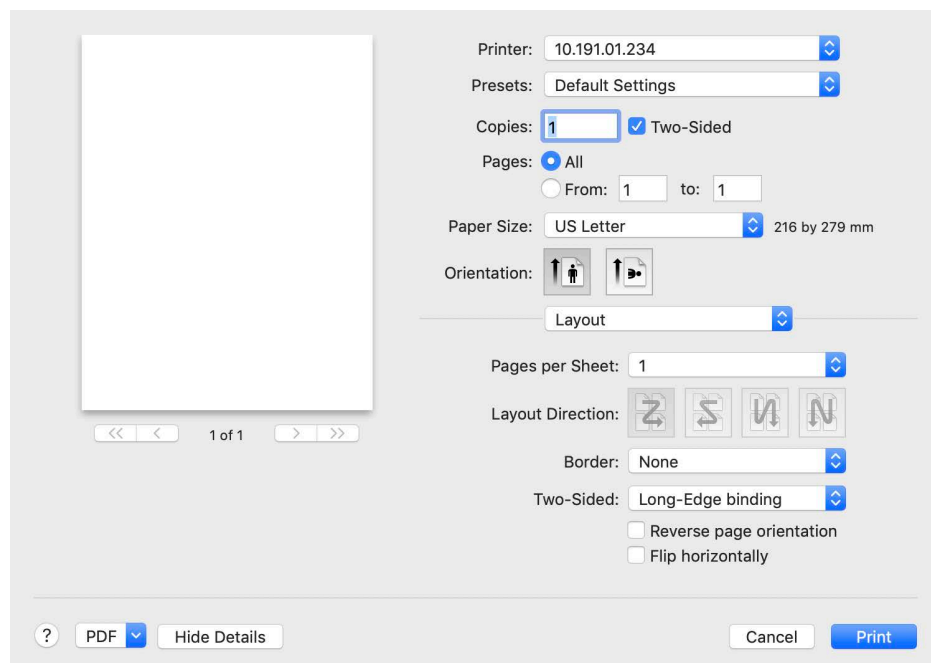
The Print dialog appears when you select **Print** from the File menu of an application. The Print dialog has some settings panes provided by the OS and can also be extended to allow for third-party customization.

### Standard Panes for PCL Mode (Raster Driver) and PDF Mode

The printing system uses information from the PPD file to populate many of the model-specific features in these panes located at the bottom of the Print dialog. Actual selections vary by OS.

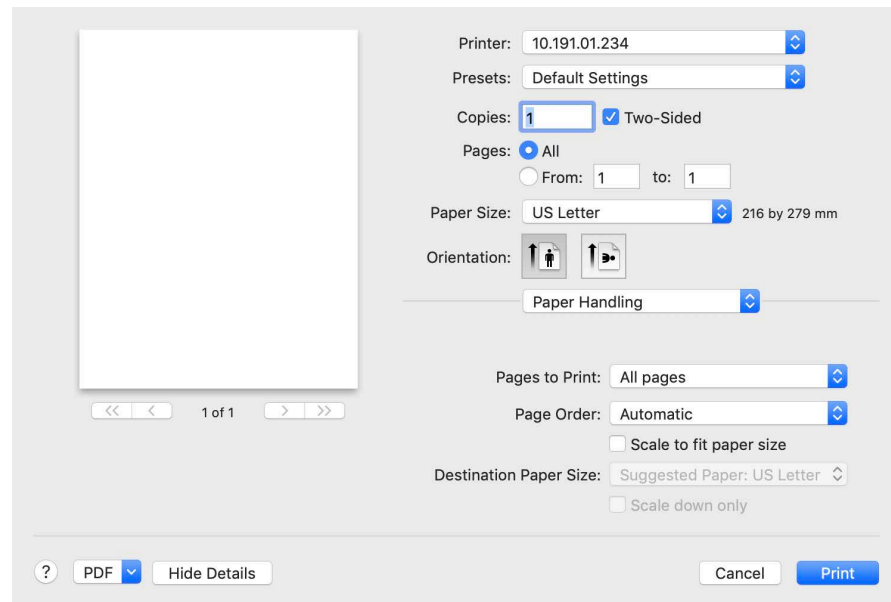
### Layout Pane

The Layout pane provides settings for pages per sheet, border, and duplex.



### Paper Handling Pane

The Paper Handling pane provides settings for destination paper size after scaling.





Printer: 10.191.01.234

Presets: Default Settings

Copies: 1 ☒ Two-Sided

Pages: ☒ All  
☐ From: 1 to: 1

Paper Size: US Letter 216 by 279 mm

Orientation:  

Paper Handling

Pages to Print: All pages

Page Order: Automatic

☐ Scale to fit paper size

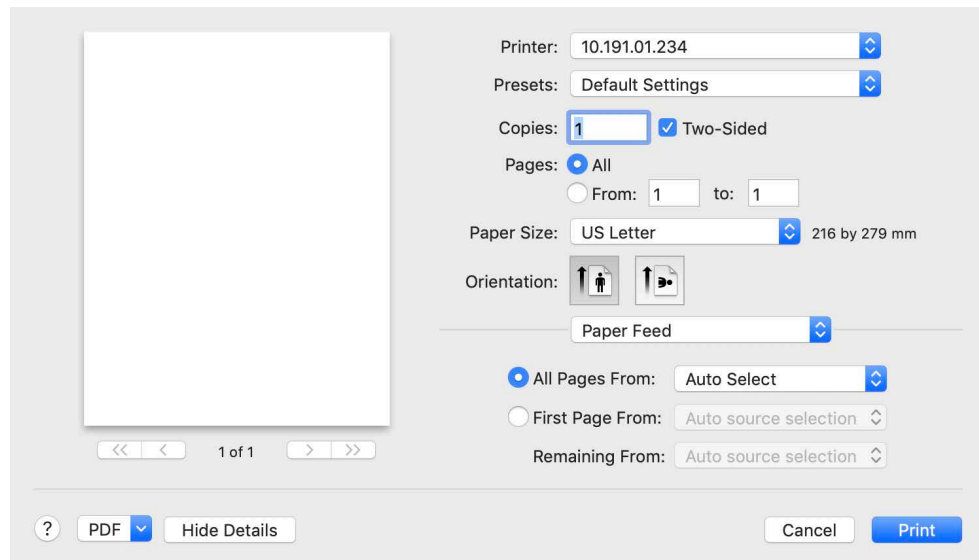
Destination Paper Size: Suggested Paper: US Letter

☐ Scale down only

? PDF Hide Details Cancel Print

## Paper Feed Pane

The Paper Feed pane provides settings for selecting the paper input tray.





Printer: 10.191.01.234

Presets: Default Settings

Copies: 1 ☒ Two-Sided

Pages: ☒ All  
☐ From: 1 to: 1

Paper Size: US Letter 216 by 279 mm

Orientation:  

Paper Feed

☒ All Pages From: Auto Select

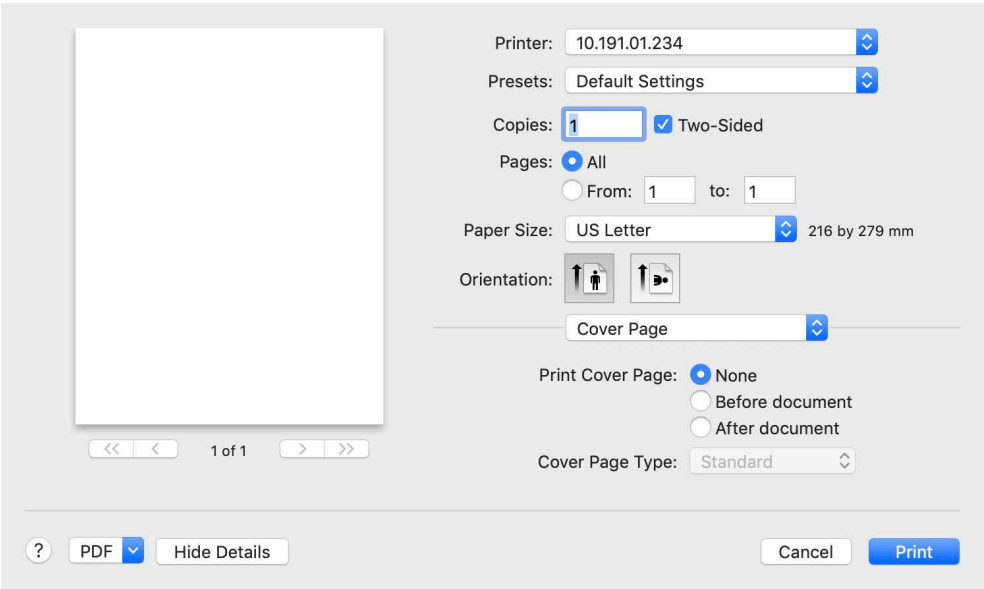
☐ First Page From: Auto source selection

Remaining From: Auto source selection

? PDF Hide Details Cancel Print

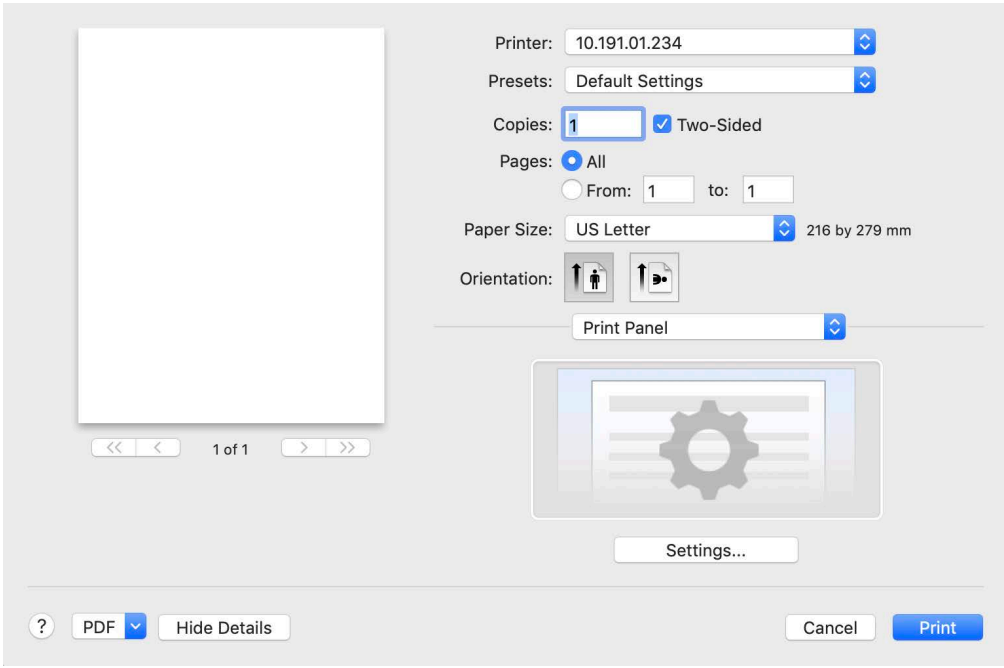
## Cover Page Pane

The Cover Page pane provides settings for printing a cover page with predefined types and/or billing information.



Print Panel Pane

The Print Panel pane allows users to launch the external Print Panel application directly from the Print dialog, modify print settings, and apply the settings to the current print job.



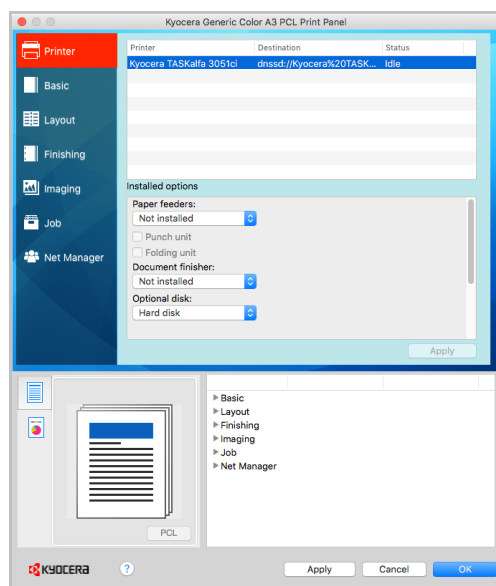


## 4 Print Panel Application

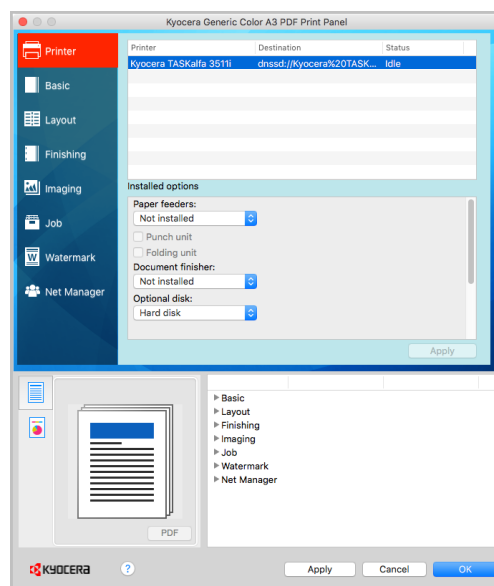
The Print Panel application is the main part of Mac Driver 4.2. Users can modify, save, and load permanent or temporary print settings. It can be launched from the Launchpad or from the Print dialog.

### Printer Pane

The Printer pane displays all installed Mac Driver 4.2 printer instances. Users can use this pane to choose a printer, and change print settings and installable options. When launched from the Print dialog, this pane is hidden, as settings can only be set for the current printer in the Print dialog.



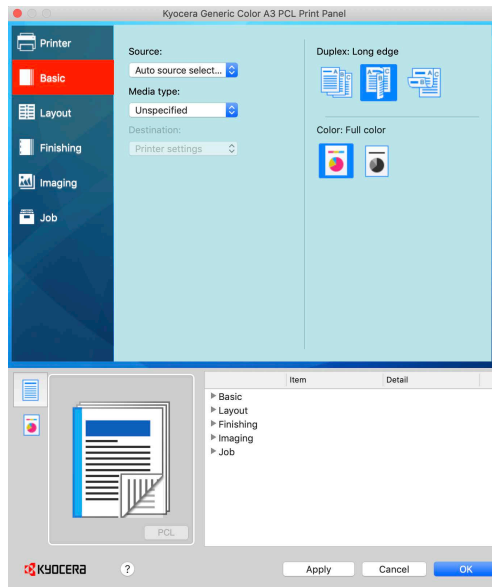
Printer Pane – PCL Mode



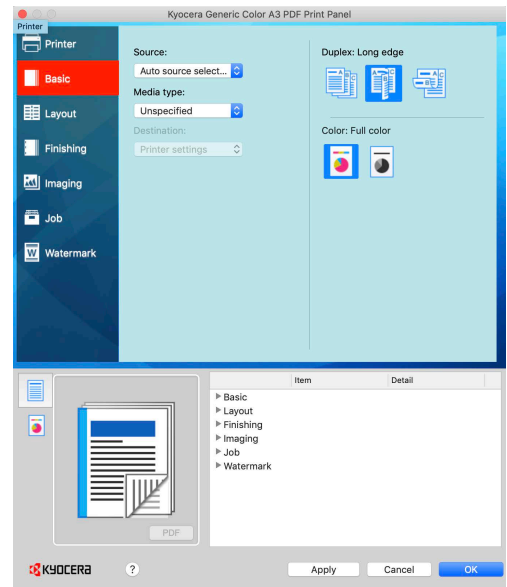
Printer Pane – PDF Mode

### Basic Pane

The Basic pane contains the most commonly used features, including Source, Media type, Duplex, and Color.



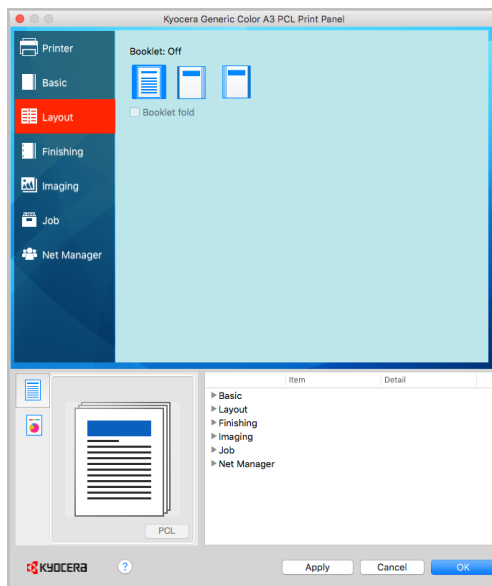
Basic Pane - PCL Mode



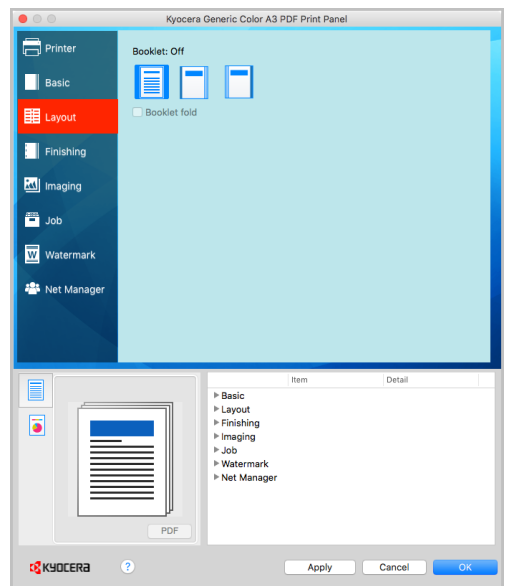
Basic Pane - PDF Mode

## Layout Pane

The Layout pane contains Booklet.



Layout Pane - PCL Mode

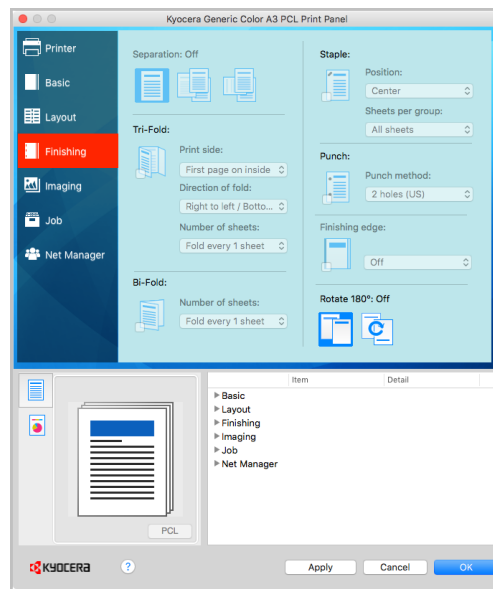


Layout Pane - PDF Mode

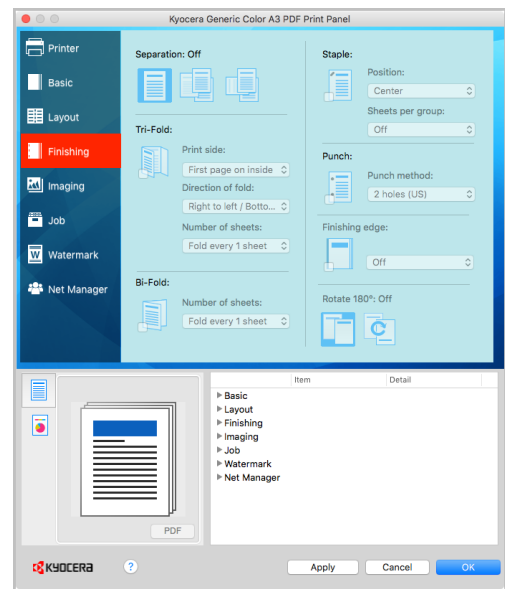
## Finishing Pane

The Finishing pane supports Staple, Punch, Tri-Fold/Bi-Fold, and Rotate 180°.





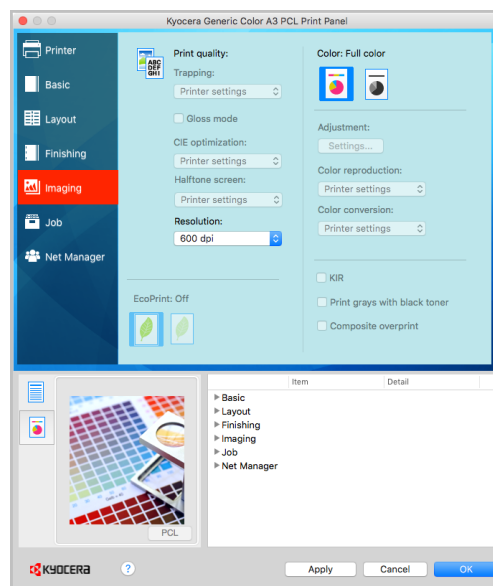
Finishing Pane - PCL Mode



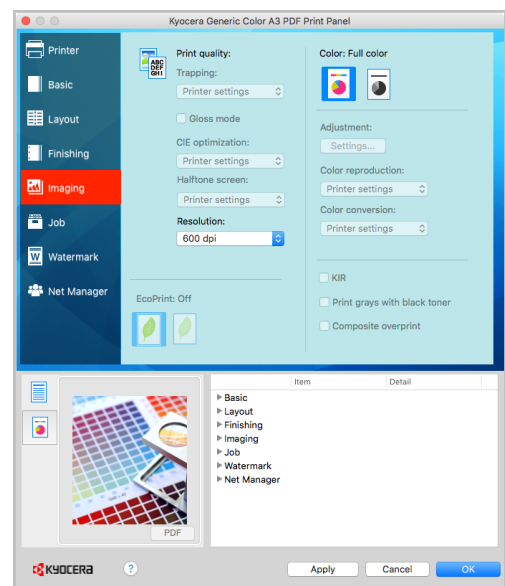
Finishing Pane - PDF Mode

## Imaging Pane

The Imaging pane allows users to set color mode and resolution.



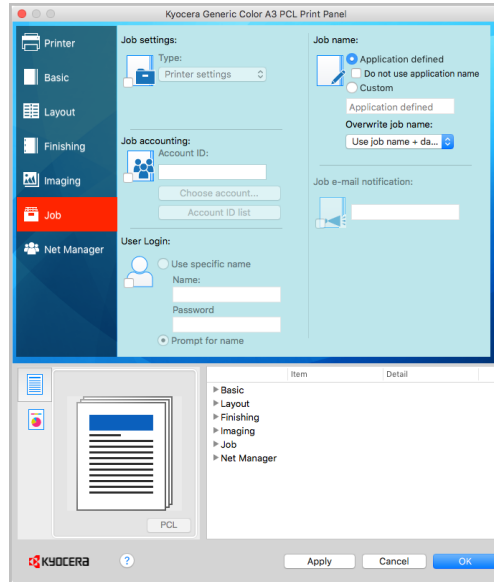
Imaging Pane - PCL Mode



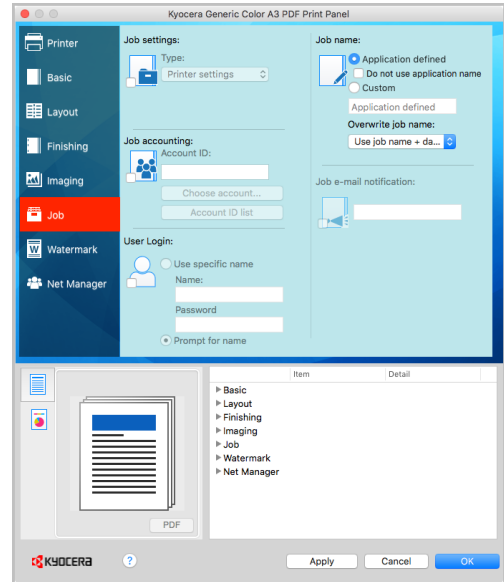
Imaging Pane - PDF Mode

## Job Pane

The Job pane supports features for Job settings, Job name, Job accounting, and User Login.



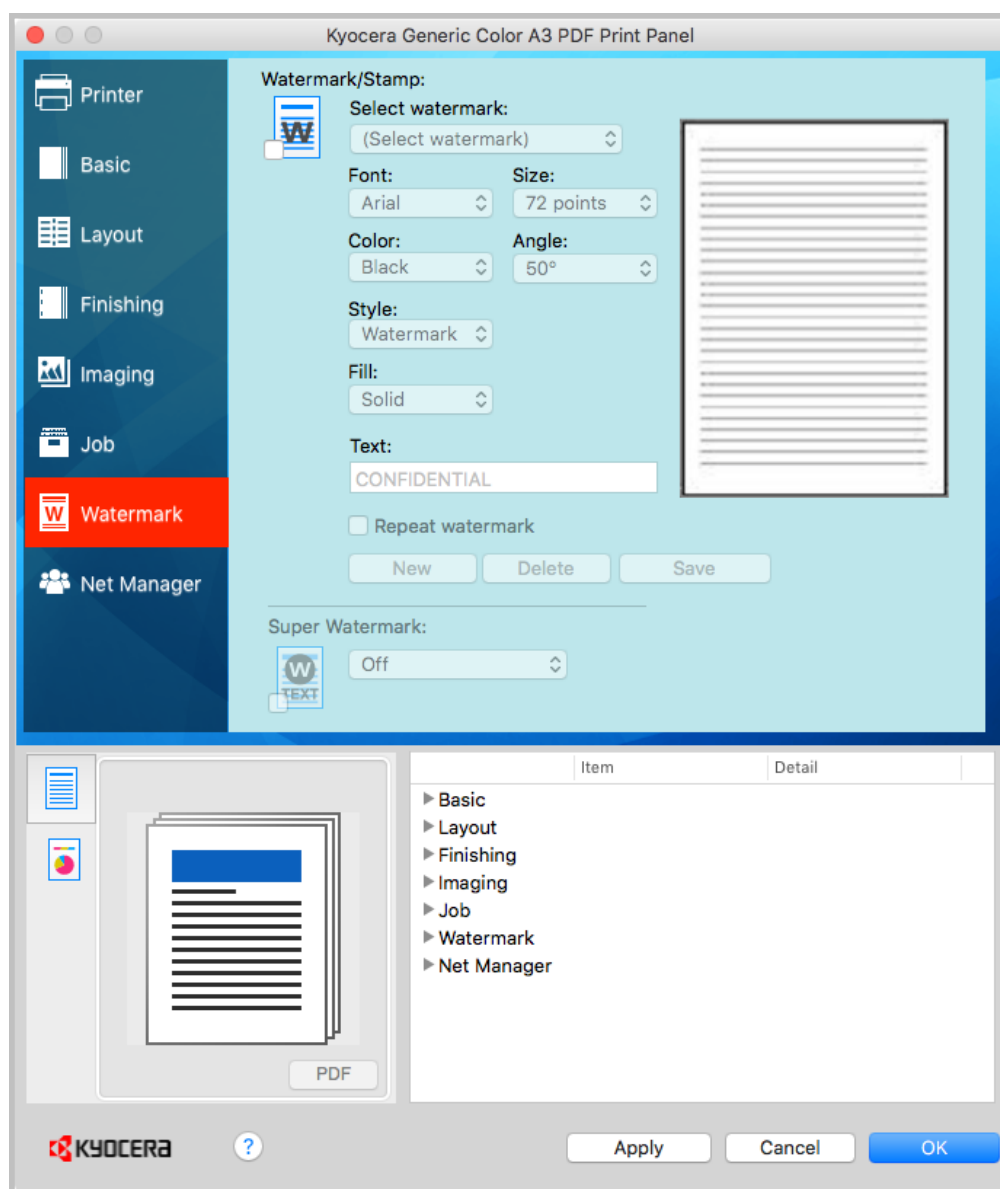
Job Pane - PCL Mode



Job Pane - PDF Mode

## Watermark Pane

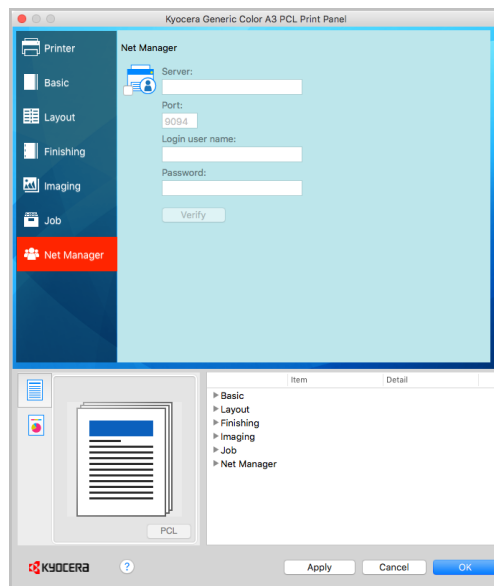
The Watermark pane displays settings for watermark or stamp with specific settings such as text, font, size, color, angle, style, fill, and repeat. This pane is available on the PDF Mode driver.



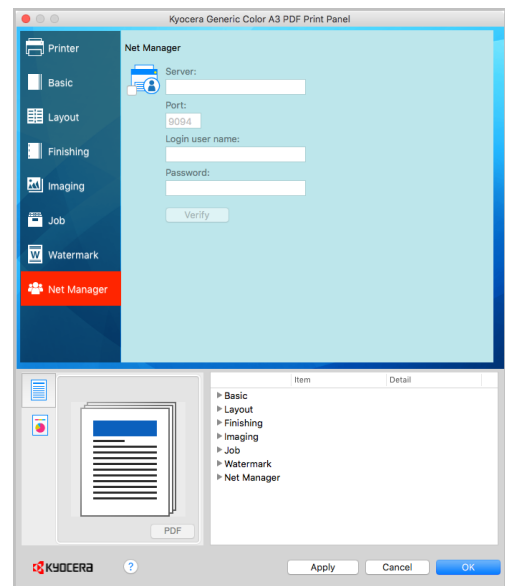
Watermark Pane – PDF Mode

## Net Manager Pane

The Net Manager pane provides settings to integrate with the Net Manager server. The Net Manager server must be installed separately.



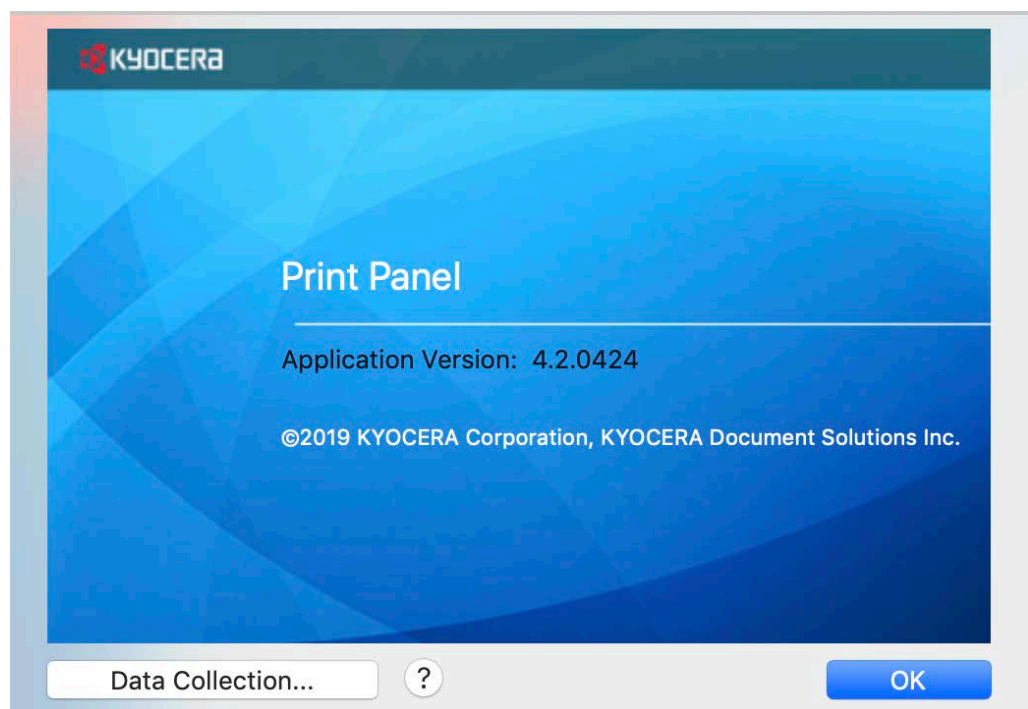
Net Manager Pane - PCL Mode



Net Manager Pane - PDF Mode

## About Dialog

The About dialog can be displayed by clicking the logo button on the left bottom corner of the Print Panel application. It displays version and copyright information of the Print Panel application.



## Data Collection

By clicking the **Data Collection** button on the About dialog, users can select a participation option whether to allow the application to collect anonymous usage data.

We ask you to help improve our application and/or products by providing usage information.

**The application DOES NOT collect any personal data.**

Regarding data collection, please read the PRIVACY POLICY as follows.

**PRIVACY POLICY**

This application uses Google Analytics, analytical services provided by Google Inc., to gather and help analyze information on how users use this application and/or network printers. This information helps us improve the quality of this application and/or the products.

The application does not collect any personal data.

For details, please see [www.google.com/policies/privacy/partners/](http://www.google.com/policies/privacy/partners/)

☒ Yes, I want to help improve your products

☐ No, I do not wish to take part in this feature

OK

## Supported Print Features

	PCL mode	PDF mode
Color Mode (for color models only)	Color*	Color*
	Black & White	Black & White
Resolution	300 DPI (for monochrome models only)	300 DPI (for monochrome models only)
	600 DPI*	600 DPI*
Media type	Unspecified*	Unspecified*
	Auto media selection	Auto media selection
	Plain	Plain
	Transparency	Transparency
	Preprinted	Preprinted
	Labels	Labels
	Bond	Bond

	PCL mode	PDF mode
	Recycled	Recycled
	Vellum	Vellum
	Rough	Rough
	Letterhead	Letterhead
	Color	Color
	Prepunched	Prepunched
	Envelope	Envelope
	Cardstock	Cardstock
	Coated	Coated
	Thick	Thick
	High quality	High quality
	Custom type 1-8	Custom type 1-8
Booklet	Off*	Off*
	Left edge binding	Left edge binding
	Right edge binding	Right edge binding
Print side (Tri-Fold only)	Off*	Off*
	First page on inside	First page on inside
	First page on outside	First page on outside
Direction of fold (Tri-Fold only)	Off*	Off*
	Right to left / Bottom to top	Right to left / Bottom to top
	Left to right / Top to bottom	Left to right / Top to bottom
Number of sheets	Off*	Off*
	Fold every 1 sheet	Fold every 1 sheet
	...	...
	Fold every 5 sheets	Fold every 5 sheets
Staple	Off*	Off*
	Center	Center
	Front	Front
	Rear	Rear
	Booklet Stitch	
Sheets per group	Off*	

	PCL mode	PDF mode
	Staple every 2 sheets	
	...	
	Staple every 65 sheets (70 for JA models)	
Punch method	Off*	Off*
	2 holes	2 holes
	2 holes (EUR)	2 holes (EUR)
	3 holes	3 holes
	4 holes	
Rotate 180°	On	
	Off*	
Separation		Off*
		Offset jobs
Job settings	Printer Settings*	Printer Settings*
	Collate	Collate
	None	None
	Private print	Quick copy
		Proof and hold
		Job storage
		Private print
		Custom box
Job accounting	(By default, this feature is not enabled)	(By default, this feature is not enabled)
	Account ID	Account ID
User Login	(By default, this feature is not enabled)	(By default, this feature is not enabled)
	Use Specific Name	Use Specific Name
	Prompt for Name	Prompt for Name
Watermark		(By default, this feature is not enabled)
		Watermark/Stamp
Net Manager	(By default, this feature is not enabled)	(By default, this feature is not enabled)

	PCL mode	PDF mode
	Server	Server
	Port	Port
	Login user name	Login user name
	Password	Password
	Verify	Verify



## 5 PCL and PDF Comparison with KPDL

In the following table, "X" indicates that the feature is fully supported by the driver and "O" indicates a limited feature.

Mac 4.2 Drivers	PCL Raster Driver	PDF Driver	KPDL Driver
<b>Basic Features</b>			
Source	O	O	X
Border line	X	X	X
Paper size	X	X	X
Custom print size	X *Actual selections vary by device model.		X *Actual selections vary by device model.
Pages per sheet	X	O (1, 2, 4)	X
Duplex	X	X	X
Collate	X	X	X
Scale to fit	X	X	X
Cover page (System Provided)	X	X	X
Destination			X
Media type	X	X	X

Mac 4.2 Drivers	PCL Raster Driver	PDF Driver	KPDL Driver
Banner print			X
<b>Layout Features</b>			
Booklet	X	X	X
Booklet fold			X
<b>Finishing Features</b>			
Offset jobs		X	X
Rotate copies			X
Tri-Fold/Bi-Fold	X	X	X
Print side	X	X	X
Direction of fold	X	X	X
Number of sheets	X	X	X
Staple	X	X	X
Sheets per group	X		X
Punch method	X	X	X
Finishing edge			X
Rotate 180°	X		X
<b>Imaging Features</b>			
Color mode	X	X	X
Gloss mode			X
Resolution	X	X	X
Color reproduction			X
Print grays with black toner			X
Halftone screen			X
EcoPrint			X
Color conversion			X
Trapping			X
KIR			X
CIE Optimization			X
Composite Overprint			X
<b>Adjustment Features</b>			

Mac 4.2 Drivers	PCL Raster Driver	PDF Driver	KPDL Driver
Monochrome adjustment (Lightness, Contrast)			X
Color adjustment (HSL)			X
Color adjustment (Color Balance)			X
<b>Publishing Features</b>			
Cover mode			X
Transparency interleaving			X
Page insert			X
<b>Job Features</b>			
Job name	X	X	X
Don't use application name	X	X	X
Overwrite job name	X	X	X
Job settings	O	X	X
Job email notification			X
<b>Job Accounting Features</b>			
Account ID	X	X	X
<b>User Login Features</b>			
Use specific name	X	X	X
Prompt for name	X	X	X
<b>Watermark Features</b>			
Super watermark			X
Watermark		X	X
Stamp		X	X
<b>Net Manager Features</b>			
Server	X	X	X
Port	X	X	X

Mac 4.2 Drivers	PCL Raster Driver	PDF Driver	KPDL Driver
Login user name	X	X	X
Password	X	X	X
Verify	X	X	X
<b>Installable Options</b>			
Paper feeder	X	X	X
Duplex unit			X
Document finisher	X	X	X
Mailbox			X
Multi tray			X
Punch unit	X	X	X
Folding unit	X	X	X
Job separator			X
Optional disk	X	X	X
Memory			X
<b>Fonts</b>			
System fonts	X	X	X
Device fonts			

**KYOCERA Document Solutions America, Inc.****Headquarters**

225 Sand Road,  
Fairfield, New Jersey 07004-0008, USA  
Phone: +1-973-808-8444  
Fax: +1-973-882-6000

**Latin America**

8240 NW 52nd Terrace, Suite 301  
Miami, Florida 33166, USA  
Phone: +1-305-421-6640  
Fax: +1-305-421-6666

**KYOCERA Document Solutions Canada, Ltd.**

6120 Kestrel Rd., Mississauga, ON L5T 1S8,  
Canada  
Phone: +1-905-670-4425  
Fax: +1-905-670-8116

**KYOCERA Document Solutions****Mexico, S.A. de C.V.**

Calle Arquimedes No. 130, 4 Piso, Colonia Polanco  
Chapultepec, Delegation Miguel Hidalgo,  
Distrito Federal, C.P. 11560, México  
Phone: +52-555-383-2741  
Fax: +52-555-383-7804

**KYOCERA Document Solutions Brazil, Ltda.**

Alameda África, 545, Pólo Empresarial Consbrás,  
Tamboré, Santana de Parnaíba, State of São Paulo,  
CEP 06543-306, Brazil  
Phone: +55-11-2424-5353  
Fax: +55-11-2424-5304

**KYOCERA Document Solutions Chile SpA**

Jose Ananias 505, Macul. Santiago, Chile  
Phone: +56-2-2670-1900  
Fax: +562-2350-7150

**KYOCERA Document Solutions****Australia Pty. Ltd.**

Level 3, 6-10 Talavera Road North Ryde NSW, 2113,  
Australia  
Phone: +61-2-9888-9999  
Fax: +61-2-9888-9588

**KYOCERA Document Solutions****New Zealand Ltd.**

Ground Floor, 19 Byron Avenue, Takapuna, Auckland,  
New Zealand  
Phone: +64-9-415-4517  
Fax: +64-9-415-4597

**KYOCERA Document Solutions****Asia Limited**

13/F., Mita Centre, 552-566, Castle Peak Road Tsuen  
Wan, New Territories, Hong Kong  
Phone: +852-2496-5678  
Fax: +852-2610-2063

**KYOCERA Document Solutions****(China) Corporation**

8F, No. 288 Nanjing Road West, Huangpu District,  
Shanghai, 200003, China  
Phone: +86-21-5301-1777  
Fax: +86-21-5302-8300

**KYOCERA Document Solutions****(Thailand) Corp., Ltd.**

335 Ratchadapisek Road, Wongsawang, Bangsue,  
Bangkok 10800,  
Thailand  
Phone: +66-2-586-0333  
Fax: +66-2-586-0278

**KYOCERA Document Solutions****Singapore Pte. Ltd.**

12 Tai Seng Street #04-01A, Luxasia Building,  
Singapore 534118  
Phone: +65-6741-8733  
Fax: +65-6748-3788

**KYOCERA Document Solutions****Hong Kong Limited**

16/F., Mita Centre, 552-566, Castle Peak Road Tsuen  
Wan, New Territories, Hong Kong  
Phone: +852-3582-4000  
Fax: +852-3185-1399

**KYOCERA Document Solutions****Taiwan Corporation**

6F., No.37, Sec. 3, Minquan E. Rd., Zhongshan Dist.,  
Taipei 104, Taiwan R.O.C.  
Phone: +886-2-2507-6709  
Fax: +886-2-2507-8432

**KYOCERA Document Solutions Korea Co., Ltd.**

#10F Daewoo Foundation Bldg 18, Toegye-ro, Jung-  
gu, Seoul, Korea  
Phone: +822-6933-4050  
Fax: +822-747-0084

**KYOCERA Document Solutions****India Private Limited**

Second Floor, Centrum Plaza, Golf Course Road,  
Sector-53, Gurgaon, Haryana 122002, India  
Phone: +91-0124-4671000  
Fax: +91-0124-4671001

**KYOCERA Document Solutions Europe B.V.**

Bloemlaan 4, 2132 NP Hoofddorp,  
The Netherlands  
Phone: +31-20-654-0000  
Fax: +31-20-653-1256

**KYOCERA Document Solutions Nederland B.V.**

Beechavenue 25, 1119 RA Schiphol-Rijk,  
The Netherlands  
Phone: +31-20-5877200  
Fax: +31-20-5877260

**KYOCERA Document Solutions (U.K.) Limited**

Eldon Court, 75-77 London Road,  
Reading, Berkshire RG1 5BS, United Kingdom  
Phone: +44-118-931-1500  
Fax: +44-118-931-1108

**KYOCERA Document Solutions Italia S.p.A.**

Via Monfalcone 15, 20132, Milano, Italy  
Phone: +39-02-921791  
Fax: +39-02-92179-600

**KYOCERA Document Solutions Belgium N.V.**

Sint-Martinusweg 199-201 1930 Zaventem, Belgium  
Phone: +32-2-7209270  
Fax: +32-2-7208748

**KYOCERA Document Solutions France S.A.S.**

Espace Technologique de St Aubin  
Route de l'Orme 91195 Gif-sur-Yvette CEDEX, France  
Phone: +33-1-69852600  
Fax: +33-1-69853409

**KYOCERA Document Solutions Espana, S.A.**

Edificio Kyocera, Avda. de Manacor No.2, 28290 Las  
Matas (Madrid), Spain  
Phone: +34-91-6318392  
Fax: +34-91-6318219

**KYOCERA Document Solutions Finland Oy**

Atomitie 5C, 00370 Helsinki, Finland  
Phone: +358-9-47805200  
Fax: +358-9-47805212

**KYOCERA Document Solutions****Europe B.V., Amsterdam (NL) Zürich Branch**

Hohlstrasse 614, 8048 Zürich, Switzerland  
Phone: +41-44-9084949  
Fax: +41-44-9084950

**KYOCERA Bilgitas Document Solutions****Turkey A.S.**

Altunizade Mah. Prof. Fahrettin Kerim Gökay Cad.  
No:45 34662 Üsküdar İstanbul, Turkey  
Phone: +90-216-339-0020  
Fax: +90-216-339-0070

**KYOCERA Document Solutions****Deutschland GmbH**

Otto-Hahn-Strasse 12, 40670 Meerbusch, Germany  
Phone: +49-2159-9180  
Fax: +49-2159-918100

**KYOCERA Document Solutions Austria GmbH**

Wienerbergstraße 11, Turm A, 18. OG, 1100 Wien,  
Austria  
Phone: +43-1-863380  
Fax: +43-1-86338-400

**KYOCERA Document Solutions Nordic AB**

Esbogatan 16B 164 75 Kista, Sweden  
Phone: +46-8-546-550-00  
Fax: +46-8-546-550-10

**KYOCERA Document Solutions Norge Nuf**

Olaf Helsetsv. 6, 0619 Oslo, Norway  
Phone: +47-22-62-73-00  
Fax: +47-22-62-72-00

**KYOCERA Document Solutions Danmark A/S**

Ejby Industrivej 60, DK-2600 Glostrup, Denmark  
Phone: +45-70223880  
Fax: +45-45765850

**KYOCERA Document Solutions Portugal Lda.**

Rua do Centro Cultural, 41 (Alvalade) 1700-106  
Lisboa,  
Portugal  
Phone: +351-21-843-6780  
Fax: +351-21-849-3312

**KYOCERA Document Solutions****South Africa (Pty) Ltd.**

KYOCERA House, Hertford Office Park,  
90 Bekker Road (Cnr. Allandale), Midrand, South Africa  
Phone: +27-11-540-2600  
Fax: +27-11-466-3050

**KYOCERA Document Solutions Russia LLC.**

Building 2, 51/4, Schepkina St., 129110, Moscow,  
Russia  
Phone: +7(495)741-0004  
Fax: +7(495)741-0018

**KYOCERA Document Solutions Middle East**

Dubai Internet City, Bldg. 17,  
Office 157 P.O. Box 500817, Dubai,  
United Arab Emirates  
Phone: +971-04-433-0412

**KYOCERA Document Solutions Inc.**

2-28, 1-chome, Tamatsukuri, Chuo-ku  
Osaka 540-8585, Japan  
Phone: +81-6-6764-3555  
<http://www.kyoceradocumentsolutions.com>